


Vloerweegschaal P (ijkwaardig) M

Stalen weegplateau met vier RVS IP68 loadcells.

Eigenschappen

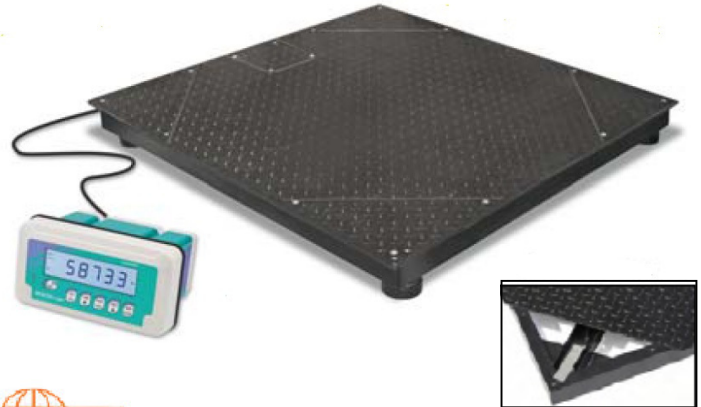
- Materiaal plateau: stalen anti-slip oppervlak
- Afwerking oppervlak: gelakt staal
- Loadcells: Roestvrij staal 420, IP68 (optioneel : IPX9K)
- Verstelbare, zelfcenterende voetjes, gegalvaniseerd
- 5 m kabel tussen IP67 RVS junction box en indicator

Indicator: **WET / WDESKLIGHT**

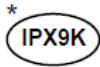
Op aanvraag: **ATEX**  **II 3 GD (zone 2, 22) versie**

Opties

Zie datasheet 'opties voor P series'





Op verzoek:




* Water protection when cleaning high pressure / steam jet (Test: pressurized hot water is sprayed on the body of the load cell from a distance of 150 mm; at the end of the test, cell load should not be damaged). Water pressure 100 bar. Water temperature 80 ° C. Test duration 250 seconds (Reference standard DIN 40050-9).


INTERN GEBRUIK (n.v.h.)

Code artikel	Weegvermogen	Indeling	Afmetingen	Eigen gew.	Indicator
P1250A0AS5 (1-3-7-10)	1500 kg	e=100 g	1250x1250 mm	103 kg	WET
P1215A0AS5 (1-3-8-10-11)	1500 kg	e=100 g	1200x1500 mm	105 kg	
P1500A0AS5 (1-3-9-11)	1500 kg	e=100 g	1500x1500 mm	139 kg	
P1250A0A (1-3-7-10)	3000 kg	e=200 g	1250x1250 mm	103 kg	
P1215A0A (1-3-8-10-11)	3000 kg	e=200 g	1200x1500 mm	105 kg	
P1500A0A (1-3-9-11)	3000 kg	e=200 g	1500x1500 mm	139 kg	


Code artikel	Weegvermogen	Indeling	Afmetingen	Eigen gew.	Indicator
P1250D0AS5 (2-4-5-7-10)	1500 kg	e=100 g	1250x1250 mm	102 kg	WDESKLIGHT
P1215D0AS5 (2-4-5-8-10-11)	1500 kg	e=100 g	1200x1500 mm	104 kg	
P1500D0AS5 (2-4-5-9-11)	1500 kg	e=100 g	1500x1500 mm	138 kg	
P1250D0A (2-4-5-7-10)	3000 kg	e=200 g	1250x1250 mm	102 kg	
P1215D0A (2-4-5-8-10-11)	3000 kg	e=200 g	1200x1500 mm	105 kg	
P1500D0A (2-4-5-9-11)	3000 kg	e=200 g	1500x1500 mm	138 kg	

Geijkt CE-M M

Code artikel	Weegvermogen	Indeling	Afmetingen	Eigen gew.		Indicator
P1250A1AS5 (1-3-7-10)	1500 kg	e=0.5 kg	1250x1250 mm	103 kg		WET
P1215A1AS5 (1-3-8-10-11)	1500 kg	e=0.5 kg	1200x1500 mm	105 kg		
P1500A1AS5 (1-3-9-11)	1500 kg	e=0.5 kg	1500x1500 mm	139 kg		
P1250A1A (1-3-7-10)	3000 kg	e=1 kg	1250x1250 mm	103 kg		
P1215A1A (1-3-8-10-11)	3000 kg	e=1 kg	1200x1500 mm	105 kg		
P1500A1A (1-3-9-11)	3000 kg	e=1 kg	1500x1500 mm	139 kg		

Code artikel	Weegvermogen	Indeling	Afmetingen	Eigen gew.		Indicator
P1250D1AS5 (2-4-5-6-7-10)	1500 kg	e=0.5 kg	1250x1250 mm	102 kg		WDESKLIGHT
P1215D1AS5 (2-4-5-6-8-10-11)	1500 kg	e=0.5 kg	1200x1500 mm	104 kg		
P1500D1AS5 (2-4-5-6-9-11)	1500 kg	e=0.5 kg	1500x1500 mm	138 kg		
P1250D1A (2-4-5-6-7-10)	3000 kg	e=1 kg	1250x1250 mm	102 kg		
P1215D1A (2-4-5-6-8-10-11)	3000 kg	e=1 kg	1200x1500 mm	104 kg		
P1500D1A (2-4-5-6-9-11)	3000 kg	e=1 kg	1500x1500 mm	138 kg		

Geijkt CE-M M Multi range

Code artikel	Weegvermogen	Indeling	Afmetingen	Eigen gew.	Prijs	Indicator
P1250D2AS5 (2-4-5-6-7-10)	Max1=600kg / Max 2=1500kg	e1=0.2 kg e2=0.5 kg	1250x1250 mm	102 kg		WDESKLIGHT
P1215D2AS5 (2-4-5-6-8-10-11)	Max1=600kg / Max 2=1500kg	e1=0.2 kg e2=0.5 kg	1200x1500 mm	104 kg		
P1500D2AS5 (2-4-5-6-9-11)	Max1=600kg / Max 2=1500kg	e1=0.2 kg e2=0.5 kg	1500x1500 mm	138 kg		
P1250D2A (2-4-5-6-7-10)	Max1=1500kg / Max 2=3000kg	e1=0.5 kg e2=1 kg	1250x1250 mm	102 kg		
P1215D2A (2-4-5-6-8-10-11)	Max1=1500kg / Max 2=3000kg	e1=0.5 kg e2=1 kg	1200x1500 mm	104 kg		
P1500D2A (2-4-5-6-9-11)	Max1=1500kg / Max 2=3000kg	e1=0.5 kg e2=1 kg	1500x1500 mm	138 kg		

C5 Multi range versie—5000 verdelingen

P1250D2AS5C5 (2-4-5-6-7-10)	Max1=500kg / Max 2=1000kg	e1=0.1 kg e2=0.2 kg	1250x1250 mm	102 kg		3mV/V IP67 NICKEL-PLATED STEEL LOAD CELLS
P1215D2AS5C5 (2-4-5-6-8-10-11)	Max1=500kg / Max 2=1000kg	e1=0.1 kg e2=0.2 kg	1200x1500 mm	104 kg		
P1500D2AS5C5 (2-4-5-6-9-11)	Max1=500kg / Max 2=1000kg	e1=0.1 kg e2=0.2 kg	1500x1500 mm	138 kg		
P1250D2AC5 (2-4-5-6-7-10)	Max1=1000kg / Max 2=2500kg	e1=0.2 kg e2=0.5kg	1250x1250 mm	102 kg		
P1215D2AC5 (2-4-5-6-8-10-11)	Max1=1000kg / Max 2=2500kg	e1=0.2 kg e2=0.5 kg	1200x1500 mm	104 kg		
P1500D2AC5 (2-4-5-6-9-11)	Max1=1000kg / Max 2=2500kg	e1=0.2 kg e2=0.5 kg	1500x1500 mm	138 kg		