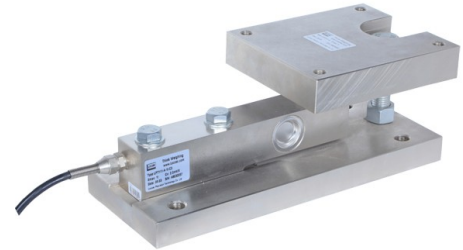
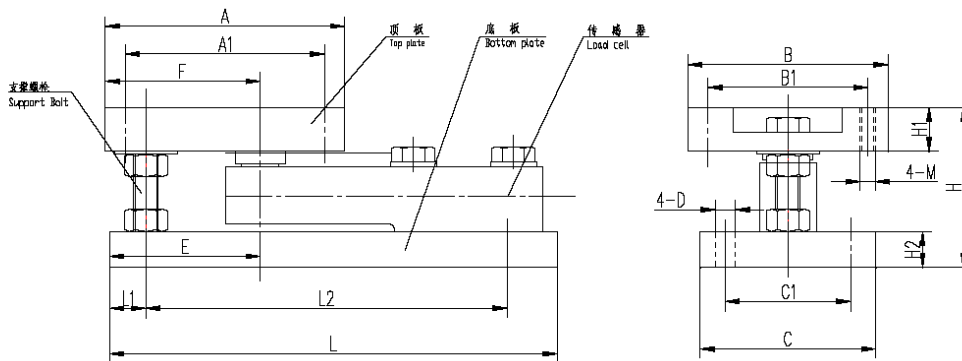


## LP7211 Weegmodules

|                       |   |
|-----------------------|---|
| <b>Weegvermogen:</b>  | 0.5 – 10t   |
| <b>Klasse:</b>        | C3  |
| <b>Eigenschappen:</b> | Met lift-off mechanisme, vaste/halfvaste opstelling |
| <b>Materiaal:</b>     | Staal of Roestvrij staal                            |

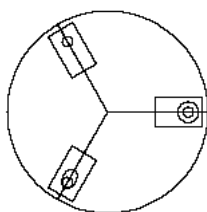


### Outline Dimension (mm)

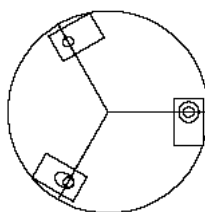


| Vermogen | L     | L1 | L2  | A   | A1  | B   | B1  | C   | C2  | H   | H1 | H2 | M   | D   | E   | F   |
|----------|-------|----|-----|-----|-----|-----|-----|-----|-----|-----|----|----|-----|-----|-----|-----|
| 0.5 – 3t | 286   | 32 | 226 | 150 | 124 | 128 | 102 | 112 | 80  | 102 | 28 | 23 | M10 | ∅13 | 96  | 99  |
| 5t, 7.5t | 317.5 | 32 | 257 | 178 | 146 | 152 | 120 | 152 | 102 | 130 | 38 | 30 | M16 | ∅17 | 99  | 102 |
| 10t      | 360   | 32 | 295 | 184 | 152 | 154 | 122 | 154 | 106 | 168 | 45 | 45 | M20 | ∅21 | 105 | 108 |

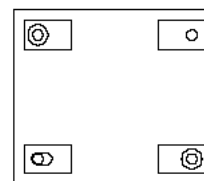
### Monteervoorbeeld:



radial install



cutting install



rectangle



float



semi-float



fixed